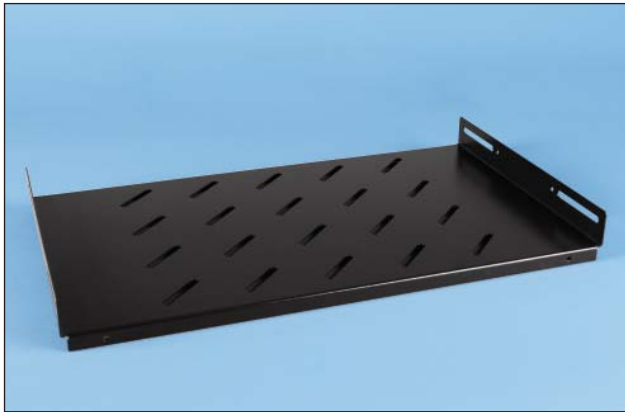
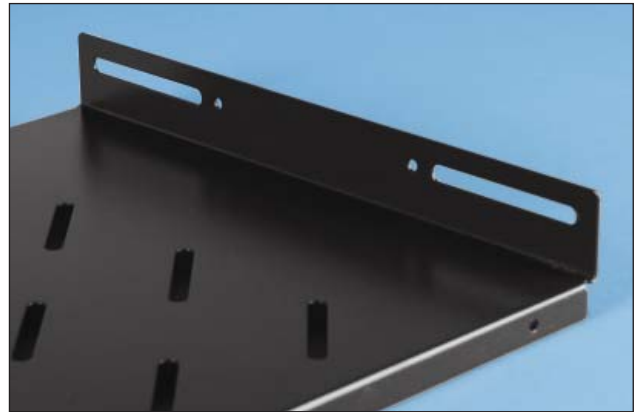


SUPPLEMENTARY ACCESSORIES

FIXED SHELF – I



Fixed shelf is used for light equipment



TECHNICAL DATA

Materials:

Cold-rolled steel, 0.05" (1.2 mm)

Surface Finishing:

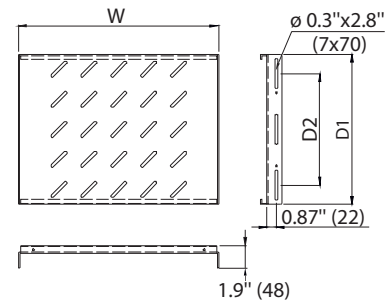
Powder coated paint

Loading capacity:

30 Lbs (60 kg)

Color:RAL7035
RAL9004

DIMENSIONS



REFERENCE CHART

Catalog number	Description	Dimensions, in (mm)			Application
		W	D1	D2	
TSHS-450-RALXXXX	Fixed shelf 10.1" (260 mm) deep	18.5 (470)	10.1 (260)	8.8 (227)	19" installation for 17.7" (450 mm) deep cabinets
TSHS-600-RALXXXX	Fixed shelf 13.7" (350 mm) deep	18.5 (470)	13.7 (350)	10.1 (260)	19" installation for 23.6" (600 mm) deep cabinets
TSHS-800-RALXXXX	Fixed shelf 21.5" (550 mm) deep	18.5 (470)	21.5 (550)	17.9 (460)	19" installation for 31.5" (800 mm) deep cabinets
TSHS-960-RALXXXX	Fixed shelf 27.7" (710 mm) deep	18.5 (470)	27.7 (710)	24.2 (620)	19" installation for 39.4" (1000 mm) deep cabinets
TSHS-1200-RALXXXX	Fixed shelf 37.4" (950 mm) deep	18.5 (470)	37.4 (950)	33.9 (860)	19" installation for 47.2" (1200 mm) deep cabinets
TPHS-600-RALXXXX	Extra-width fixed shelf 13.7" (350 mm) deep	26.4 (670)	13.7 (350)	10.1 (260)	27" installation for 23.6" (600 mm) deep cabinets, remove cable management slot and spacer
TPHS-800-RALXXXX	Extra-width fixed shelf 21.5" (550 mm) deep	26.4 (670)	21.5 (550)	17.9 (460)	27" installation for 31.5" (800 mm) deep cabinets, remove cable management slot and spacer
TPHS-960-RALXXXX	Extra-width fixed shelf 27.7" (710 mm) deep	26.4 (670)	27.7 (710)	20.3 (520)	27" installation for 39.4" (1000 mm) deep cabinets, remove cable management slot and spacer
TPHS-1200-RALXXXX	Extra-width fixed shelf 37.4" (950 mm) deep	26.4 (670)	37.4 (950)	33.9 (860)	27" installation for 47.2" (1200 mm) deep cabinets, remove cable management slot and spacer

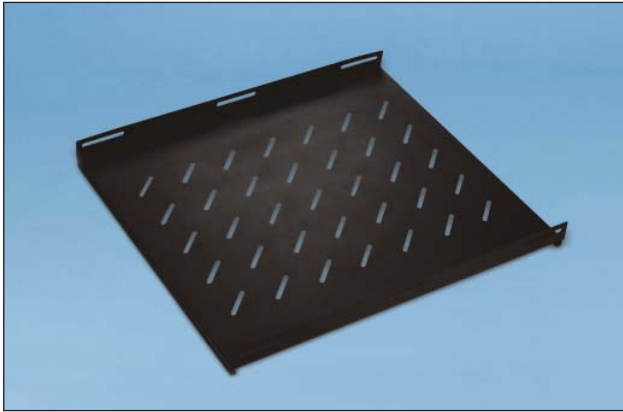
Catalog number definition:

XXXX: Surface color

9004 – Black (RAL9004)

7035 – Grey (RAL7035)

FIXED SHELF – II



TECHNICAL DATA

Features:
 1U perforated 19" rack-mountable fixed shelf
 Heavy-duty flanges

Materials:
 Cold-rolled steel

Surface finishing:
 Powder coated paint

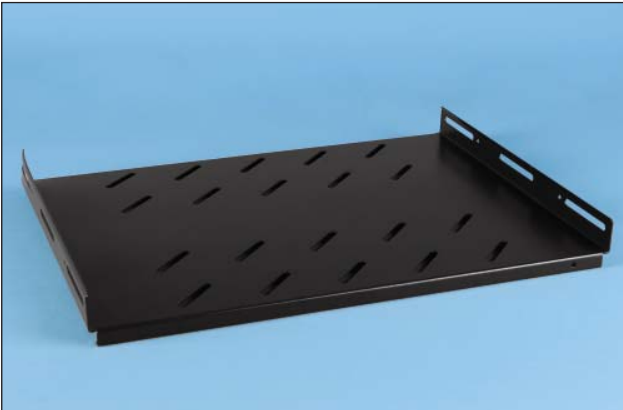
REFERENCE CHART

Catalog number	Depth, in (mm)
SRV-450-RALXXXX	17.7 (450)
SRV-600-RALXXXX	23.6 (600)
SRV-800-RALXXXX	31.5 (800)
SRV-900-RALXXXX	35.5 (900)
SRV-1000-RALXXXX	39.4 (1000)

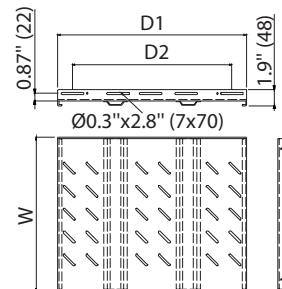
Catalog number definition:

XXXX: Surface color
9005 – Black (RAL9005)
7035 – Grey (RAL7035)

HEAVY-DUTY FIXED SHELF



DIMENSIONS



TECHNICAL DATA

Heavy-duty fixed shelf is used for applications up to 220 Lbs (100 kg)

Materials:

Cold-rolled steel, 0.05" (1.2 mm)

Color:

RAL7035

RAL9004

Surface Finishing:

Powder coated paint

Loading capacity:

220 Lbs (100 kg)

REFERENCE CHART

Catalog number	Description	Dimensions, in (mm)			Application
		W	D1	D2	
TSHH-600-RALXXXX	Heavy-duty fixed shelf 13.7" (350 mm) deep	18.5 (470)	13.7 (350)	10.1 (260)	19" installation for 23.6" (600 mm) deep cabinets
TSHH-640-RALXXXX	Heavy-duty fixed shelf 15.7" (400 mm) deep	18.5 (470)	15.7 (400)	12.2 (310)	19" installation for 23.6" (600 mm) deep cabinets
TSHH-645-RALXXXX	Heavy-duty fixed shelf 17.7" (450 mm) deep	18.5 (470)	17.7 (450)	14.2 (360)	19" installation for 23.6" (600 mm) deep cabinets
TSHH-800-RALXXXX	Heavy-duty fixed shelf 21.5" (550 mm) deep	18.5 (470)	21.5 (550)	17.9 (460)	19" installation for 31.5" (800 mm) deep cabinets
TSHH-860-RALXXXX	Heavy-duty fixed shelf 23.6" (600 mm) deep	18.5 (470)	23.6 (600)	20.1 (510)	19" installation for 31.5" (800 mm) deep cabinets
TSHH-865-RALXXXX	Heavy-duty fixed shelf 25.6" (650 mm) deep	18.5 (470)	25.6 (650)	22.0 (560)	19" installation for 31.5" (800 mm) deep cabinets
TSHH-960-RALXXXX	Heavy-duty fixed shelf 27.7" (710 mm) deep	18.5 (470)	27.7 (710)	24.2 (620)	19" installation for 39.4" (1000 mm) deep cabinets
TSHH-1200-RALXXXX	Heavy-duty fixed shelf 37.4" (950 mm) deep	18.5 (470)	37.4 (950)	33.9 (860)	19" installation for 47.2" (1200 mm) deep cabinets

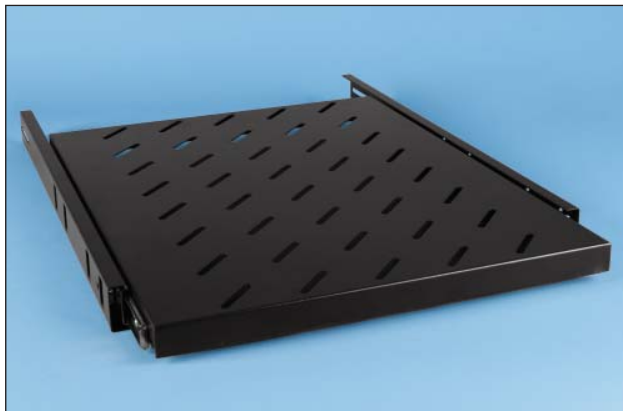
Catalog number definition:

XXXX: Surface color

9004 – Black (RAL9004)

7035 – Grey (RAL7035)

SLIDING SHELF – I



TECHNICAL DATA

Materials:

Cold-rolled steel, 0.05" (1.2 mm)

14" 2-section slide

Adjustable length:

8.3" (210 mm)

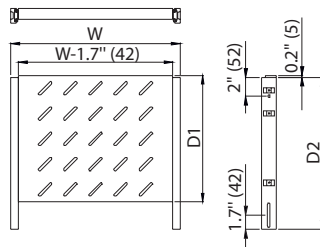
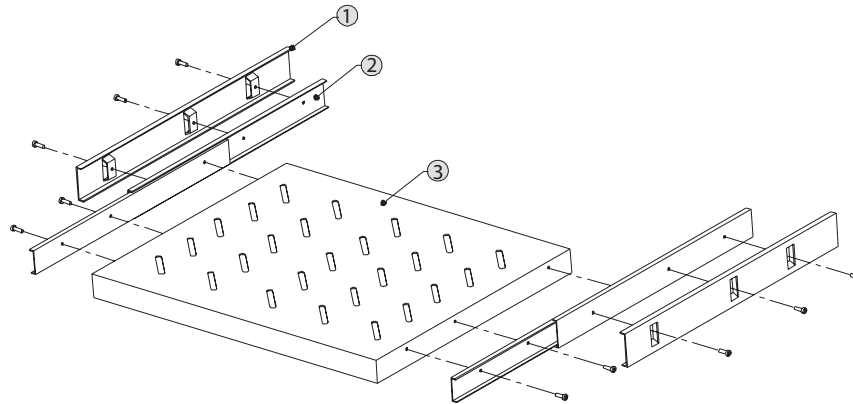
Surface Finishing:

Powder coated paint

Loading capacity:

44 Lbs (20 kg)

DIMENSIONS



Main Structure

- 1. Guiding girder
- 2. 14" 2-section sliding rail
- 3. Sliding loading plate

REFERENCE CHART

Catalog number	Description	Dimensions, in (mm)			Application
		W	D1	D2	
TSSS-600-RALXXXX	Sliding shelf 13.7" (350 mm) deep	18.5 (470)	13.7 (350)	14.8 (380)	19" installation for 23.6" (600 mm) deep cabinets
TSSS-640-RALXXXX	Sliding shelf 15.7" (400 mm) deep	18.5 (470)	15.7 (400)	16.9 (430)	19" installation for 23.6" (600 mm) deep cabinets
TSSS-645-RALXXXX	Sliding shelf 17.7" (450 mm) deep	18.5 (470)	17.7 (450)	18.9 (480)	19" installation for 23.6" (600 mm) deep cabinets
TSSS-800-RALXXXX	Sliding shelf 21.5" (550 mm) deep	18.5 (470)	21.5 (550)	22.6 (580)	19" installation for 31.5" (800 mm) deep cabinets
TSSS-860-RALXXXX	Sliding shelf 23.6" (600 mm) deep	18.5 (470)	23.6 (600)	24.8 (630)	19" installation for 31.5" (800 mm) deep cabinets
TSSS-865-RALXXXX	Sliding shelf 25.6" (650 mm) deep	18.5 (470)	25.6 (650)	26.8 (680)	19" installation for 31.5" (800 mm) deep cabinets
TSSS-960-RALXXXX	Sliding shelf 27.7" (710 mm) deep	18.5 (470)	27.7 (710)	28.9 (740)	19" installation for 39.4" (1000 mm) deep cabinets
TSSS-1200-RALXXXX	Sliding shelf 37.4" (950 mm) deep	18.5 (470)	37.4 (950)	38.6 (980)	19" installation for 47.2" (1200 mm) deep cabinets

Catalog number definition:

- XXXX:** Surface color
- 9004** – Black (RAL9004)
- 7035** – Grey (RAL7035)

SLIDING SHELF – II



TECHNICAL DATA

Features:

1U perforated 19" rack-mountable sliding shelves

Materials:

Cold-rolled steel

Surface finishing:

Powder coated paint

REFERENCE CHART

Catalog number	Depth, in (mm)
SRVS-600-RALXXXX	23.6 (600)
SRVS-800-RALXXXX	31.5 (800)
SRVS-900-RALXXXX	35.5 (900)
SRVS-1000-RALXXXX	39.4 (1000)

Catalog number definition:

XXXX: Surface color

9005 – Black (RAL9005)

7035 – Grey (RAL7035)

CANTILEVER SHELF – I



TECHNICAL DATA

Cantilever shelves-I are used for 19" installations

Materials:

Cold-rolled steel

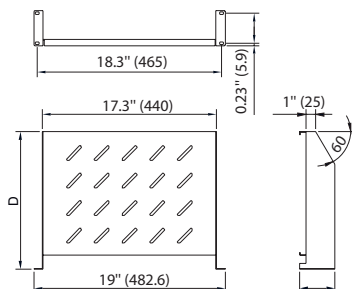
Surface Finishing:

Powder coated paint

REFERENCE CHART

Hyperline p/n	Description	Depth, in (mm)	Thickness, in (mm)
TASL-450-RALXXXX	Cantilever shelf - I for 17.7" (450 mm) wide cabinets	11.8 (300)	0.06 (1.5)
TASL-600-RALXXXX	Cantilever shelf - I for 23.6" (600 mm) wide cabinets	13.7 (350)	0.06 (1.5)
TASL-800-RALXXXX	Cantilever shelf - I for 31.5" (800 mm) wide cabinets	21.7 (550)	0.06 (1.5)
TASL-960-RALXXXX	Cantilever shelf - I for 39.4" (1000 mm) wide cabinets	27.9 (710)	0.06 (1.5)
TASL-1200-RALXXXX	Cantilever shelf - I for 47.2" (1200 mm) wide cabinets	37.4 (950)	0.06 (1.5)

DIMENSIONS

**Catalog number definition:**

XXXX: Surface color

9004 – Black (RAL9004)

7035 – Grey (RAL7035)

CANTILEVER SHELF – II



TECHNICAL DATA

Cantilever shelves-II are used for 19" installations

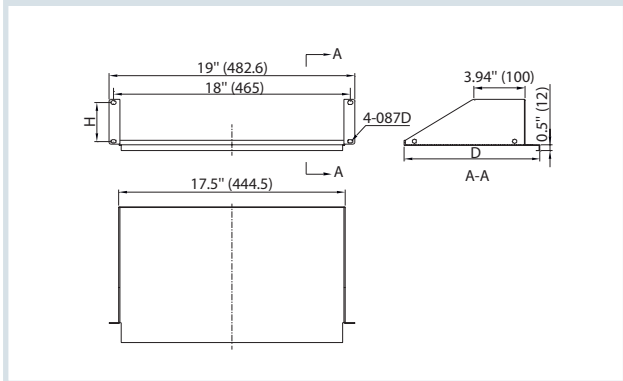
Materials:
Cold-rolled steel

Surface Finishing:
Powder coated paint

REFERENCE CHART

Catalog number	Description	Depth, in (mm)	H, in (mm)	Thickness, in (mm)
TASS1-267-RALXXXX	1U, 10" deep cantilever shelf – II	10.5 (267)	1.3 (31.8)	0.06 (1.5)
TASS1-380-RALXXXX	1U, 15" deep cantilever shelf – II	15.0 (381)	1.3 (31.8)	0.06 (1.5)
TASS-267-RALXXXX	2U, 10" deep cantilever shelf – II	10.5 (267)	3.0 (76.2)	0.06 (1.5)
TASS-380-RALXXXX	2U, 15" deep cantilever shelf – II	15.0 (381)	3.0 (76.2)	0.06 (1.5)

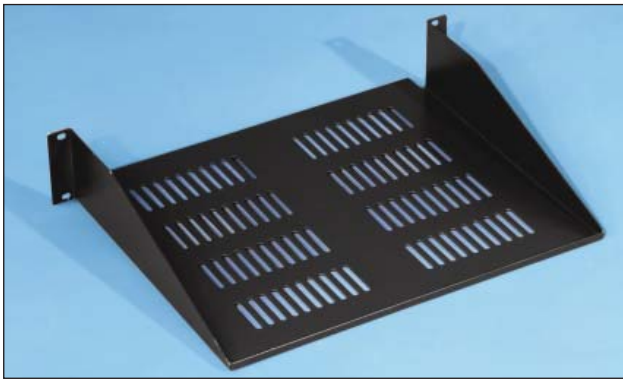
DIMENSIONS



Catalog number definition:

XXXX: Surface color
9004 – Black (RAL9004)
7035 – Grey (RAL7035)

CANTILEVER SHELF – III



TECHNICAL DATA

Cantilever shelves-III are used for 19" installations

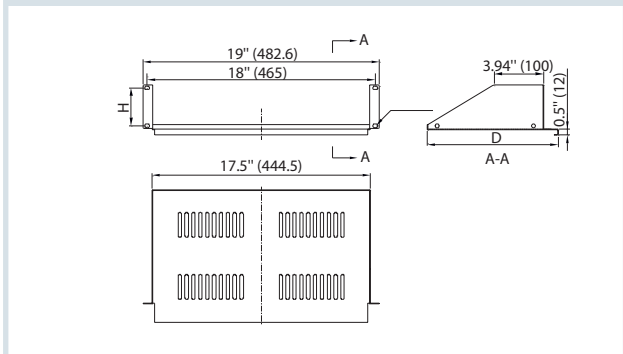
Materials:
Cold-rolled steel

Surface Finishing:
Powder coated paint

REFERENCE CHART

Catalog number	Description	Depth, in (mm)	H, in (mm)	Thickness, in (mm)
TASG1-267-RALXXXX	1U, 10" deep cantilever shelf – III	10.5 (267)	1.25 (31.8)	0.06 (1.5)
TASG1-380-RALXXXX	1U, 15" deep cantilever shelf – III	15.0 (381)	1.25 (31.8)	0.06 (1.5)
TASG-267-RALXXXX	2U, 10" deep cantilever shelf – III	10.5 (267)	3.0 (76.2)	0.06 (1.5)
TASG-380-RALXXXX	2U, 15" deep cantilever shelf – III	15.0 (381)	3.0 (76.2)	0.06 (1.5)

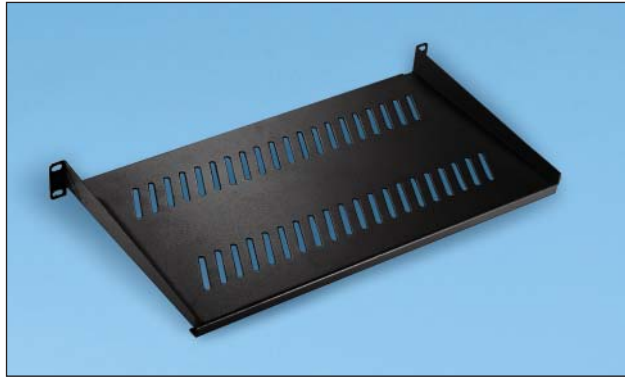
DIMENSIONS



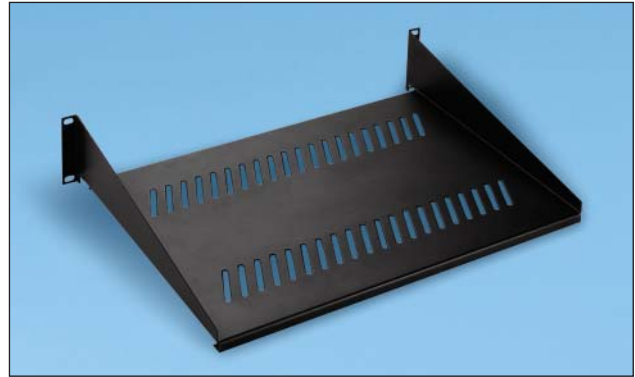
Catalog number definition:

XXXX: Surface color
9004 – Black (RAL9004)
7035 – Grey (RAL7035)

CANTILEVER SHELF – IV



1U cantilever shelf IV



2U cantilever shelf IV

TECHNICAL DATA

Features:

1U or 2U 19" rack-mountable cantilever shelves
Heavy-duty flanges

Materials:

Cold-rolled steel

Surface finishing:

Powder coated paint

REFERENCE CHART

Catalog number	Useful Height, HU (U=1.75" (44.45 mm))	Depth, in (mm)	Width, in (mm)
SRVA-250-RALXXXX	1U	9.9 (250)	17.7 (448)
SRVA-400-RALXXXX	2U	15.8 (400)	17.7 (448)

Catalog number definition:

XXXX: Surface color

9005 – Black (RAL9005)

7035 – Grey (RAL7035)

DISPLAY PANEL



10U display panel is used in 19" cabinets

TECHNICAL DATA

Materials:

Cold-rolled steel 0.05" (1.2 mm)

Surface Finishing:

Powder coated paint

REFERENCE CHART

Catalog number	Description	Dimension of window, in (mm)
TDP-15-RALXXXX	15" display panel	11.2x8.5 (285x215)
TDP-17-RALXXXX	17" display panel	12.6x9.5 (320x240)

Catalog number definition:

XXXX: Surface color

9004 – Black (RAL9004)

7035 – Grey (RAL7035)

KEYBOARD TRAY



TECHNICAL DATA

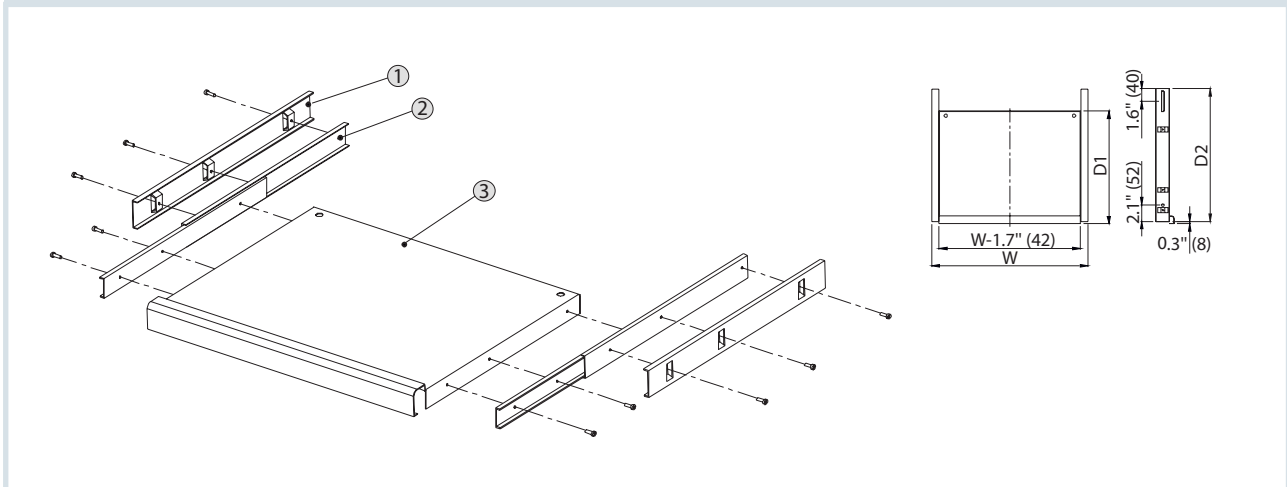
Materials:
Cold-rolled steel, 0.05" (1.2 mm)
14" 2-section slide

Surface Finishing:
Powder coated paint

Adjustable length:
8.3" (210 mm)

Loading capacity:
44 Lbs (20 kg)

DIMENSIONS



Main Structure

- 1. Guiding girder
- 2. 14" double-section sliding rail
- 3. Keyboard loading panel

REFERENCE CHART

Catalog number	Dimensions, in (mm)			Application
	W	D1	D2	
TSKP-600-RALXXXX	18.5 (470)	13.8 (350)	14.8 (380)	19" installation for 23.6" (600 mm) deep cabinets
TSKP-800-RALXXXX	18.5 (470)	13.8 (350)	22.6 (580)	19" installation for 31.5" (800 mm) deep cabinets
TSKP-960-RALXXXX	18.5 (470)	13.8 (350)	28.9 (740)	19" installation for 39.4" (1000 mm) deep cabinets
TSKP-1200-RALXXXX	18.5 (470)	13.8 (350)	38.6 (980)	19" installation for 47.2" (1200 mm) deep cabinets
TPKP-600-RALXXXX	26.4 (670)	13.8 (350)	14.8 (380)	27" installation for 23.6" (600 mm) deep cabinets, remove cable management slot and spacer
TPKP-800-RALXXXX	26.4 (670)	13.8 (350)	22.6 (580)	27" installation for 31.5" (800 mm) deep cabinets, remove cable management slot and spacer
TPKP-960-RALXXXX	26.4 (670)	13.8 (350)	28.9 (740)	27" installation for 39.4" (1000 mm) deep cabinets, remove cable management slot and spacer
TPKP-1200-RALXXXX	26.4 (670)	13.8 (350)	38.6 (980)	27" installation for 47.2" (1200 mm) deep cabinets, remove cable management slot and spacer

Catalog number definition:

- XXXX:** Surface color
- 9004** – Black (RAL9004)
- 7035** – Grey (RAL7035)

KEYBOARD TRAY WITH MOUSE PANEL



TECHNICAL DATA

Keyboard tray with mouse panel is used in 19" cabinets. It is easy to operate

Materials:

Cold-rolled steel, 0.05" (1.2 mm)
12" 3 pcs sliding rails

Surface Finishing:

Powder coated paint

Flexing length:

8.7" (220 mm)

Loading capacity:

44 Lbs (20 kg)

Catalog number definition:

XXXX: Surface color

9004 – Black (RAL9004)

7035 – Grey (RAL7035)

REFERENCE CHART

Catalog number	Description	Height, U
TMKP-220-RALXXXX	Keyboard tray with mouse panel	2U

DIGITAL TEMPERATURE UNIT



FEATURES:

- Simple structure, easy installation
- Easy cabling and operation
- Disturbing resistance, reliable running
- 2-way output

TECHNICAL DATA

Function:

Intelligently adjusts inner cabinet temperature through controlled fan units

Protection Degree:

IP23

MAIN PARAMETERS

Specification	Parameter
Temperature range	32°F – 122°F (0°C – 50°C)
Input	10 kOm
Output	2-way output
Consumption	3 W
Power supply	220 VAC/ 50-60 Hz
Current	16 A
Accuracy	±33.8°F (1°C)
Display	2-way 8-section digital pipe, red
Ambient temperature	14°F – 158°F (-10°C – +70°C)
Maintain temperature	-4°F – 176°F (-20°C – +80°C)
Ambient humidity	≤85%
Installation	19"

DELIVERY SET

1. Temperature controller
2. Cable 3.9 ft (1.2 m)
3. Temperature sensor
4. Fixing accessories



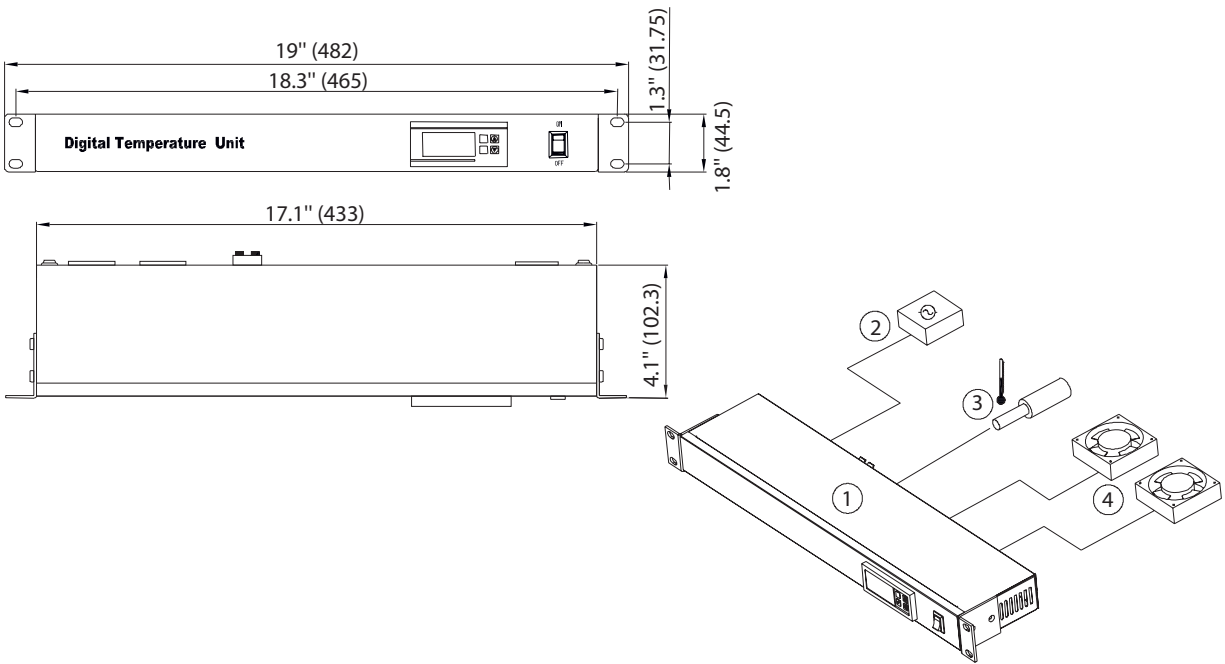
Digital temperature unit in TTC cabinet



Digital temperature unit – rear view



DIMENSIONS:



Main Structure

- 1. Temperature controller
- 2. Power supply

- 3. Temperature sensor
- 4. Fan unit

REFERENCE CHART

Catalog number	Plug type	Voltage/Frequency	Current
TMPC-110V-RAL9004	UL	110V/50-60Hz	10A
TMPC-230V-RAL9004	Germany	220V/50-60Hz	16A

1U FAN UNIT



TECHNICAL DATA

Functions:

Fan units are used in network cabinets to adjust inner temperature

Parameters:

Temperature: 32°F – 122°F (0°C – 50°C)

Input: 220VAC/115VAC

German type plug and line

Materials:

Cold-rolled steel 0.05" (1.2 mm)

Surface Finishing:

Powder coated paint

REFERENCE CHART

Catalog number	Description
TRFA-2F-RALXXXX	1U fan unit with 2 fans
TRFA-3F-RALXXXX	1U fan unit with 3 fans
TRFA-4F-RALXXXX	1U fan unit with 4 fans

Catalog number definition:

XXXX: Surface color

9004 – Black (RAL9004)

7035 – Grey (RAL7035)

1U FAN UNIT WITH THERMOSTAT



TECHNICAL DATA

Functions:

Fan units are used in network cabinets to adjust inner temperature

Parameters:

Temperature: 32°F – 122°F (0°C – 50°C)

Input: 220VAC/115VAC

German type plug and line

Materials:

Cold-rolled steel 0.05" (1.2 mm)

Surface Finishing:

Powder coated paint

REFERENCE CHART

Catalog number	Description
TRFA-MICR-2F-RALXXXX	1U fan unit with 2 fans and thermostat
TRFA-MICR-3F-RALXXXX	1U fan unit with 3 fans and thermostat
TRFA-MICR-4F-RALXXXX	1U fan unit with 4 fans and thermostat

Catalog number definition:

XXXX: Surface color

9004 – Black (RAL9004)

7035 – Grey (RAL7035)

TTC FAN UNIT



TECHNICAL DATA

Functions:

Fan units are used in network cabinets to adjust inner temperature

Materials:

Cold-rolled steel

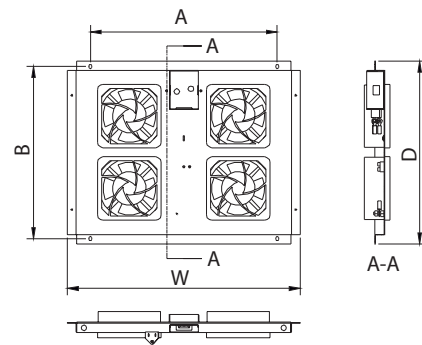
Thickness:

Power cord box – 0.05" (1.2 mm), fan tray – 0.03" (0.8 mm)
German type plug and line

Surface Finishing:

Powder coated paint

DIMENSIONS



REFERENCE CHART

Catalog number	Description	Dimensions, in (mm)			
		W	D	A	B
TFAT-TC600-2-RALXXXX	Fan unit with 2 fans for 23.6" (600 mm) deep TTC cabinets	17.7 (450)	13.8 (351)	14.2 (360)	13.0 (331)
TFAT-TC800-4-RALXXXX	Fan unit with 4 fans for 31.5" (800 mm) deep TTC cabinets	17.7 (450)	21.7 (551)	14.2 (360)	20.9 (531)
TFAT-TC900-4-RALXXXX	Fan unit with 4 fans for 35.4" (900 mm) deep TTC cabinets	17.7 (450)	25.6 (651)	14.2 (360)	24.8 (631)
TFAT-TC1000-4-RALXXXX	Fan unit with 4 fans for 39.4" (1000 mm) deep TTC cabinets	17.7 (450)	29.6 (751)	14.2 (360)	28.8 (731)

Catalog number definition:

XXXX: Surface color

9004 – Black (RAL9004)

7035 – Grey (RAL7035)

TSC FAN UNIT



TECHNICAL DATA

Functions:

Fan units are used in network cabinets to adjust inner temperature

Materials:

Cold-rolled steel

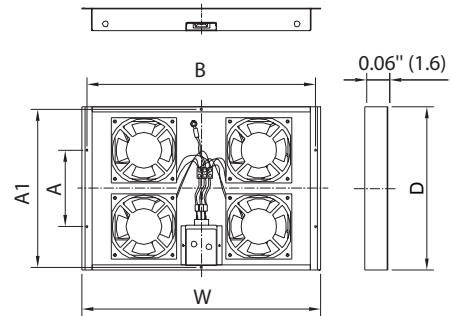
Thickness:

Power cord box – 0.05" (1.2 mm), fan tray – 0.03" (0.8 mm)
German type plug and line

Surface Finishing:

Powder coated paint

DIMENSIONS



REFERENCE CHART

Catalog number	Description	Dimensions, in (mm)				
		W	D	A	B	A1
TFAT-SC600-2-RALXXXX	Fan unit with 2 fans for TSC	17.2 (436)	6.3 (160)	0	16.5 (418)	5.9 (150)
TFAT-SC800-4-RALXXXX	Fan unit with 4 fans for TSC	17.2 (436)	11.8 (300)	5.5 (140)	16.5 (418)	11.4 (290)
TFAT-SC1000-6-RALXXXX	Fan unit with 6 fans for TSC	17.2 (436)	17.3 (440)	11 (280)	16.5 (418)	16.9 (430)

POWER DISTRIBUTION UNITS

Ergonomic 19" standard equipment:

- Power distribution unit designed for the 19" standard
- Body made of natural anodized aluminum
- Extremely compact solution

Safety factor:

- Use of high-quality plastic materials
- Fire-resistant
- Halogen free
- Insensitive to ultra violet rays

TECHNICAL DATA

Voltage rating: 125 V/230 V AC

Maximum current: 10A/16A

Cable specification: 3 x 0.0015 in² x 8.2 ft/0.0023 in² x 6.6 ft
(3 x 1 mm² x 2.5 m/1.5 mm² x 2 m)



REFERENCE CHART

Dimensions, in (mm)			Socket type		Plug type	Catalog number
Length, in (mm)	Width, in (mm)	Height, in (mm)	American IEC 60906-2	Computer IEC 320 C13		
25.3 (643)	1.74 (44.4)	1.74 (44.4)	12	2	IEC 60906	SHT-12NEMA-2IEC-2.5N
26.3 (668)	1.74 (44.4)	1.74 (44.4)	13		IEC 60906	SHT-13NEMA-2.5N
31.5 (798.5)	1.74 (44.4)	1.74 (44.4)	18		IEC 60906	SHT-18NEMA-2.5N
30.7 (780)	1.74 (44.4)	1.74 (44.4)	19		IEC 60906	SHT-19NEMA-2.5N
19.0 (482.6)	1.74 (44.4)	1.74 (44.4)	10		IEC 60906	SHT-10NEMA-2.5N
19.0 (482.6)	1.74 (44.4)	1.74 (44.4)	3	3	IEC 60906	SHT19-3NEMA-3IEC-2.5N
19.0 (482.6)	1.74 (44.4)	1.74 (44.4)	6		IEC 60906	SHT19-6NEMA-2.5N
19.0 (482.6)	1.74 (44.4)	1.74 (44.4)	6		IEC 320 C14 10A	SHT19-6NEMA-IEC
19.0 (482.6)	1.74 (44.4)	1.74 (44.4)		7	IEC 60906	SHT19-7IEC-2.5N
19.0 (482.6)	1.74 (44.4)	1.74 (44.4)		8	IEC 320 C14 10A	SHT19-8IEC-2.5IEC
19.0 (482.6)	1.74 (44.4)	1.74 (44.4)	9		IEC 60906	SHT19-9NEMA-2.5N

POWER DISTRIBUTION UNITS WITH CONTROL FUNCTION



REFERENCE CHART

Dimensions, in (mm)			Socket type		Plug type	Control			Catalog number
Length, in (mm)	Width, in (mm)	Height, in (mm)	American IEC 60906-2	Computer IEC 320 C13		Circuit breaker	Power indicator	Illuminated switch	
23.6 (600)	1.74 (44.4)	1.74 (44.4)	12		IEC 60906			+	SHT-12NEMA-S-2.5N
34.9 (887)	1.74 (44.4)	1.74 (44.4)	15	3	IEC 60906	+			SHT-15NEMA-3IEC-B-2.5N
31.2 (792)	1.74 (44.4)	1.74 (44.4)	18		IEC 60906		+		SHT-18NEMA-I-2.5N
32.2 (816)	1.74 (44.4)	1.74 (44.4)	18		IEC 60906			+	SHT-18NEMA-S-2.5N
25.3 (641)	1.74 (44.4)	1.74 (44.4)	9	3	IEC 60906			+	SHT-9NEMA-3IEC-S-2.5N
19.0 (482.6)	1.74 (44.4)	1.74 (44.4)	3	2	IEC 60906	+			SHT19-3NEMA-2IEC-B-2.5
19.0 (482.6)	1.74 (44.4)	1.74 (44.4)	5		IEC 60906			+	SHT19-5NEMA-S-2.5N
19.0 (482.6)	1.74 (44.4)	1.74 (44.4)		6	IEC 320 C14 10A			+	SHT19-6IEC-S-2.5IEC
19.0 (482.6)	1.74 (44.4)	1.74 (44.4)	6		IEC 60906	+			SHT19-6NEMA-B-2.5N
19.0 (482.6)	1.74 (44.4)	1.74 (44.4)	6		IEC 60906			+	SHT19-6NEMA-S-2.5N
19.0 (482.6)	1.74 (44.4)	1.74 (44.4)		7	IEC 60906			+	SHT19-7IEC-S-2.5N
19.0 (482.6)	1.74 (44.4)	1.74 (44.4)	8		IEC 60906			+	SHT19-8NEMA-S-2.5N
19.0 (482.6)	1.74 (44.4)	1.74 (44.4)	8		IEC 320 C14 10A			+	SHT19-8NEMA-S-2.5IEC

POWER DISTRIBUTION UNITS WITH PROTECTION FUNCTIONALITY



REFERENCE CHART

Dimensions, in (mm)			Socket type		Plug type	Protection	Catalog number
Length, in (mm)	Width, in (mm)	Height, in (mm)	American IEC 60906-2	Computer IEC 320 C13		Surge protection component	
19.0 (482.6)	1.74 (44.4)	1.74 (44.4)		6	IEC 320 C14 10A	+	SHT19-6IEC-F-2.5IEC
19.0 (482.6)	1.74 (44.4)	1.74 (44.4)	6		IEC 60906	+	SHT19-6NEMA-F-2.5N
19.0 (482.6)	1.74 (44.4)	1.74 (44.4)	7		IEC 60906	+	SHT19-7NEMA-F-2.5N

POWER DISTRIBUTION UNITS WITH CONTROL AND PROTECTION FUNCTIONALITY



REFERENCE CHART

Dimensions, in (mm)			Socket type		Plug type	Control			Protection		Catalog number
Length, in (mm)	Width, in (mm)	Height, in (mm)	American IEC 60906-2	Computer IEC 320 C13		Power indicator	Illuminated switch	Circuit breaker	Overvoltage protection	Surge protection component	
35.5 (901.5)	1.74 (44.4)	1.74 (44.4)	12	4	IEC 60906	+		+		+	SHT-12NEMA-4IEC-BF-2.5N
33 (839)	1.74 (44.4)	1.74 (44.4)	12	4	IEC 60906		+			+	SHT-12NEMA-4IEC-SF-2.5N
35.7 (905.5)	1.74 (44.4)	1.74 (44.4)	15	1	IEC 60906			+		+	SHT-15NEMA-1IEC-BF-2.5N
33.2 (843.5)	1.74 (44.4)	1.74 (44.4)	15	1	IEC 60906		+			+	SHT-15NEMA-1IEC-SF-2.5N
35.7 (906.5)	1.74 (44.4)	1.74 (44.4)	15	3	IEC 60906		+			+	SHT-15NEMA-3IEC-SF-2.5N
19.0 (482.6)	1.74 (44.4)	1.74 (44.4)	5		IEC 60906		+			+	SHT19-5NEMA-SF-2.5N
19.0 (482.6)	1.74 (44.4)	1.74 (44.4)	6		IEC 60906	+			+		SHT19-6NEMA-U-2.5N
19.0 (482.6)	1.74 (44.4)	1.74 (44.4)	7		IEC 60906	+			+		SHT19-7NEMA-U-2.5N

HORIZONTAL PLASTIC CABLE MANAGERS



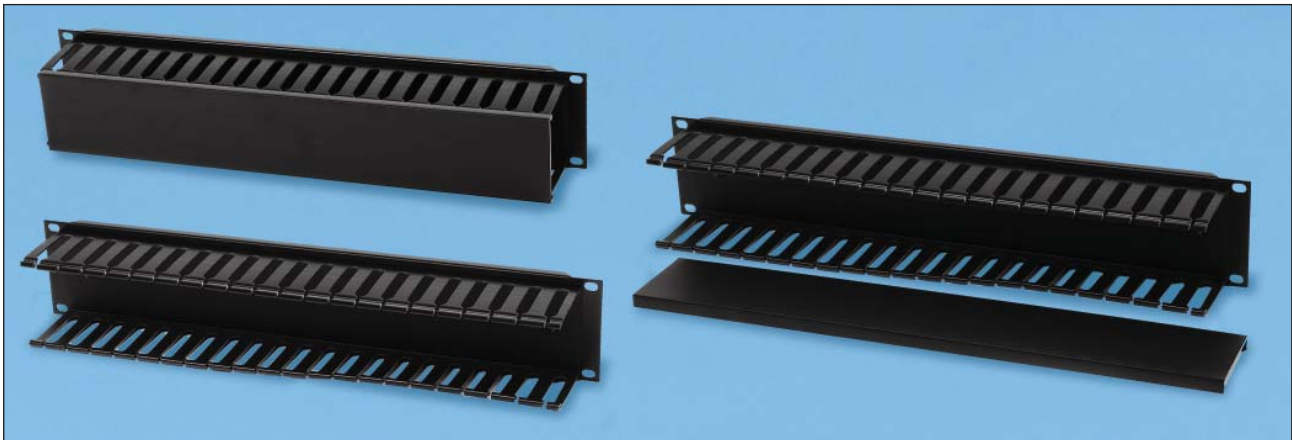
19" Cable Manager with Plastic Rings, 1U



19" Cable Manager with Plastic Rings, 2U



19" Cable Manager with Plastic Rings and Cover, 1U



19" Cable Manager with Plastic Rings and Cover, 2U



19" Double-sided Cable Manager with Plastic Rings, 1U

REFERENCE CHART

Catalog number	Description
CM-1U-PL	19" Cable manager with plastic rings, 1U
CM-2U-PL	19" Cable manager with plastic rings, 2U
CM-1U-PL-COV	19" Cable manager with plastic rings and cover, 1U
CM-2U-PL-COV	19" Cable manager with plastic rings and cover, 2U
CM-1U-PL-DBL	19" Double-sided Cable manager with plastic rings, 2U

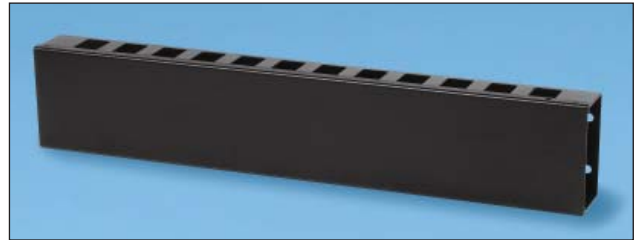
HORIZONTAL METAL CABLE MANAGERS



19" Cable Manager with Metal Rings, 1U



19" Cable Manager with Metal Rings, 2U



19" Cable Manager with Metal Rings and Cover, 2U



19" Cable Manager with Metal Rings and Cover, 1U



19" Rear Cable Manager

REFERENCE CHART

Catalog number	Description
CM-1U-ML	19" Cable manager with metal rings, 1U
CM-2U-ML	19" Cable manager with metal rings, 2U
CM-1U-ML-COV	19" Cable manager with metal rings and cover, 1U
CM-2U-ML-COV	19" Cable manager with metal rings and cover, 2U
CM-ML-REAR	19" Rear cable manager

METAL CABLE MANAGEMENT RING

Metal Cable Management Ring (ring dimensions: 2.76" x 1.69" x 2.31"
(70 x 42.8 x 58.7 mm))

REFERENCE CHART

Catalog number	Description
CM-ML-RING	Metal cable management ring

BLANKING PANEL



TECHNICAL DATA

Features:

19" rack-mountable blanking panel

Materials:

Cold-rolled steel

Surface finishing:

Powder coated paint

REFERENCE CHART

Catalog number	Height
BPV-1-RALXXXX	1 U
BPV-2-RALXXXX	2 U
BPV-3-RALXXXX	3 U
BPV-4-RALXXXX	4 U

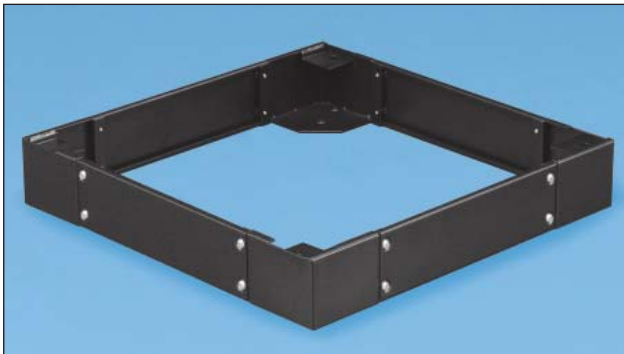
Catalog number definition:

XXXX: Surface color

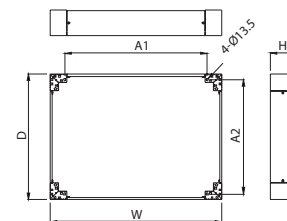
9004 – Black (RAL9004)

7035 – Grey (RAL7035)

TTC PLINTH



DIMENSIONS



Mounting hole

TECHNICAL DATA

Materials:

Cold-rolled steel 0.5" (13.5)

Surface Finishing:

Powder coated paint

Thickness:

Plate – 0.05" (1.2 mm), other elements – 0.08" (2.0 mm)

REFERENCE CHART

Catalog number	Dimensions, in (mm)					Application
	W	D	H	A1	A2	
TLT-661-RALXXXX	23.5 (596)	23.5 (596)	3.9 (100)	18.1 (460)	18.1 (460)	23.6" (600 mm) deep and 23.6" (600 mm) wide TTC cabinets
TLT-681-RALXXXX	23.5 (596)	31.3 (796)	3.9 (100)	18.1 (460)	26 (660)	31.5" (800 mm) deep and 23.6" (600 mm) wide TTC cabinets
TLT-691-RALXXXX	23.5 (596)	35.3 (896)	3.9 (100)	18.1 (460)	29.9 (760)	35.4" (900 mm) deep and 23.6" (600 mm) wide TTC cabinets
TLT-611-RALXXXX	23.5 (596)	39.2 (996)	3.9 (100)	18.1 (460)	32.3 (820)	39.4" (1000 mm) deep and 23.6" (600 mm) wide TTC cabinets
TLT-861-RALXXXX	31.3 (796)	23.5 (596)	3.9 (100)	26 (660)	18.1 (460)	23.6" (600 mm) deep and 31.5" (800 mm) wide TTC cabinets

TLT-881-RALXXXX	31.3 (796)	31.3 (796)	3.9 (100)	26.0 (660)	26.0 (660)	31.5" (800 mm) deep and 31.5" (800 mm) wide TTC cabinets
TLT-891-RALXXXX	31.3 (796)	35.3 (896)	3.9 (100)	26.0 (660)	29.9 (760)	35.4" (900 mm) deep and 31.5" (800 mm) wide TTC cabinets
TLT-811-RALXXXX	31.3 (796)	39.2 (996)	3.9 (100)	26.0 (660)	32.3 (820)	39.4" (1000 mm) deep and 31.5" (800 mm) wide TTC cabinets
TLT-662-RALXXXX	23.5 (596)	23.5 (596)	7.9 (200)	18.1 (460)	18.1 (460)	23.6" (600 mm) deep and 23.6" (600 mm) wide TTC cabinets
TLT-682-RALXXXX	23.5 (596)	31.3 (796)	7.9 (200)	18.1 (460)	26.0 (660)	31.5" (800 mm) deep and 23.6" (600 mm) wide TTC cabinets
TLT-692-RALXXXX	23.5 (596)	35.3 (896)	7.9 (200)	18.1 (460)	29.9 (760)	35.4" (900 mm) deep and 23.6" (600 mm) wide TTC cabinets
TLT-612-RALXXXX	23.5 (596)	39.2 (996)	7.9 (200)	18.1 (460)	32.3 (820)	39.4" (1000 mm) deep and 23.6" (600 mm) wide TTC cabinets
TLT-862-RALXXXX	31.3 (796)	23.5 (596)	7.9 (200)	26.0 (660)	18.1 (460)	23.6" (600 mm) deep and 31.5" (800 mm) wide TTC cabinets
TLT-882-RALXXXX	31.3 (796)	31.3 (796)	7.9 (200)	26.0 (660)	26.0 (660)	31.5" (800 mm) deep and 31.5" (800 mm) wide TTC cabinets
TLT-892-RALXXXX	31.3 (796)	35.3 (896)	7.9 (200)	26.0 (660)	29.9 (760)	35.4" (900 mm) deep and 31.5" (800 mm) wide TTC cabinets
TLT-812-RALXXXX	31.3 (796)	39.2 (996)	7.9 (200)	26.0 (660)	32.3 (820)	39.4" (1000 mm) deep and 31.5" (800 mm) wide TTC cabinets

Catalog number definition:

XXXX: Surface color

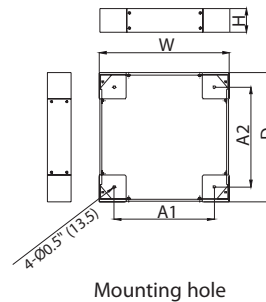
9004 – Black (RAL9004)

7035 – Grey (RAL7035)

TEFL PLINTH



DIMENSIONS



TECHNICAL DATA

Materials:

Cold-rolled steel; thickness: plate – 0.05" (1.2 mm), others – 0.08" (2.0 mm)

Surface Finishing:

Powder coated paint

REFERENCE CHART

Catalog number	Dimensions, in (mm)					Application
	W	D	H	A1	A2	
TLE-641-RALXXXX	23.5 (598)	13.6 (349)	3.9 (100)	16.6 (422)	11.1 (284.5)	15.7" (400 mm) deep and 23.6" (600 mm) wide TEFL cabinets
TLE-651-RALXXXX	23.5 (598)	17.5 (449)	3.9 (100)	16.6 (422)	15.0 (384.5)	19.7" (500 mm) deep and 23.6" (600 mm) wide TEFL cabinets
TLE-661-RALXXXX	23.5 (598)	21.4 (549)	3.9 (100)	16.6 (422)	18.9 (484.5)	23.6" (600 mm) deep and 23.6" (600 mm) wide TEFL cabinets

TLE-841-RALXXXX	31.4 (798)	13.6 (349)	3.9 (100)	24.5 (622)	11.1 (284.5)	15.7" (400 mm) deep and 31.5" (800 mm) wide TEFL cabinets
TLE-851-RALXXXX	31.4 (798)	17.5 (449)	3.9 (100)	24.5 (622)	15.0 (384.5)	19.7" (500 mm) deep and 31.5" (800 mm) wide TEFL cabinets
TLE-861-RALXXXX	31.4 (798)	21.4 (549)	3.9 (100)	24.5 (622)	18.9 (484.5)	23.6" (600 mm) deep and 31.5" (800 mm) wide TEFL cabinets
TLE-141-RALXXXX	39.3 (998)	13.6 (349)	3.9 (100)	32.4 (822)	11.1 (284.5)	39.4" (1000 mm) deep and 15.7" (400 mm) wide TEFL cabinets
TLE-156-RALXXXX	39.3 (998)	21.4 (549)	3.9 (100)	32.4 (822)	18.9 (484.5)	39.4" (1000 mm) deep and 23.6" (600 mm) wide TEFL cabinets
TLE-842-RALXXXX	31.4 (798)	13.6 (349)	7.9 (200)	24.5 (622)	11.1 (284.5)	15.7" (400 mm) deep and 31.5" (800 mm) wide TEFL cabinets
TLE-852-RALXXXX	31.4 (798)	17.5 (449)	7.9 (200)	24.5 (622)	15.0 (384.5)	19.7" (500 mm) deep and 31.5" (800 mm) wide TEFL cabinets
TLE-862-RALXXXX	31.4 (798)	21.4 (549)	7.9 (200)	24.5 (622)	18.9 (484.5)	23.6" (600 mm) deep and 31.5" (800 mm) wide TEFL cabinets

Catalog number definition:
XXXX: Surface color

9004 – Black (RAL9004)
7035 – Grey (RAL7035)

ADJUSTABLE FEET FOR CABINETS



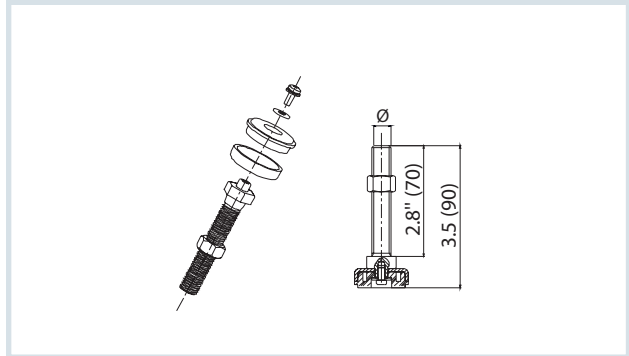
Leveling feet allow cabinet to be installed on uneven surface.

TECHNICAL DATA

Materials:
 Cold-rolled steel

Surface finishing:
 Carbonic black

DIMENSIONS



REFERENCE CHART

Catalog number	Description	Loading capacity, lbs (kg)
TFEE-TCM10	M10 feet	610 (280)
TFEE-TCM12	M12 feet	700 (320)

ADJUSTABLE FEET FOR RACKS



REFERENCE CHART

Catalog number	Size
FV-M12	M12*95

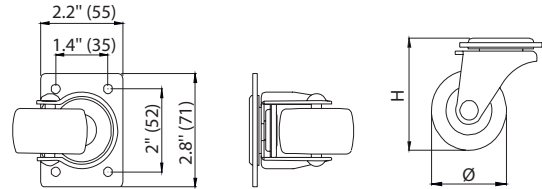
CASTORS



TECHNICAL DATA

Surface Finishing:
Color Zinc

DIMENSIONS



REFERENCE CHART

Catalog number	Description	Loading Capacity, lbs (kg)	H, in (mm)	Ø, in (mm)
TCAS-2I	2" heavy-duty castor	330 (150)	2.8 (72)	2.0 (50.8)
TCAS-2IBRK	2" castor with brake	330 (150)	2.8 (72)	2.0 (50.8)
TCAS-25I	2.5" heavy-duty castor	330 (150)	3.3 (84.7)	2.5 (63.5)
TCAS-25IBRK	2.5" castor with brake	330 (150)	3.3 (84.7)	2.5 (63.5)

CABLE ENTRY WITH BRUSH STRIP



TECHNICAL DATA

Dimensions:
15.6" x 2.5" x 0.5" (395 x 63 x 12 mm)

Materials:
Cold-rolled steel 0.05" (1.2 mm)

Surface Finishing:
Powder coated paint

Catalog number definition:

XXXX - Surface color
9004 - Black (RAL9004)
7035 - Grey (RAL7035)

REFERENCE CHART

Catalog number	Description
TCB-TSC-RAL9004	Cable entry with 2 brush strips

FIXING SET



TECHNICAL DATA

Set: screw M6, square nut, washer

REFERENCE CHART

Catalog number	Package
CNS-M6-12	Set: screw M6, square nut, washer

BAYING KIT



TECHNICAL DATA

This baying kit connects cabinets without nuts, easy and safely. Remove side doors when connecting cabinets

Materials:

Cold-rolled steel - 0.05" (1.2 mm)

Surface Finishing:

Zinc-plated

REFERENCE CHART

Catalog number	Description
TJO-TC	Connector

LIGHTING KIT



TECHNICAL DATA

The tube is CE and CCC certified

REFERENCE CHART

Catalog number	Technical characteristics
TLIGHT-16W	16 W, 6.6 ft (2 m) power cord, 2 flat pins

SMALL ROUND LOCK



TECHNICAL DATA

Simple structure, economic, easy to operate

Surface Finishing:

Nickel plated

REFERENCE CHART

Catalog number	Description
TKEY-TSC	Mailbox lock for TSC side panels
TKEY-WMC	Mailbox lock for TWM/TZH side panels