

Keystone Jack RJ-45, Category 6

Modules are also called "inserts". The most common, popular and practical type of modules is Keystone Jack developed by AMP.

The insert can be an essential element of the surface mount box, as well as a part of the modular patch-panel.

One side of the module has a female connector for patch-cord connection, the other side of the module has an IDC-type (insulation displacement contact) connector or a screw connection for the backbone cable. A special tool is needed for backbone cable termination to the IDC-type connector.

With the help of this tool each cable conductor is fitted between the convergent IDC contact blades. The contact blades cut the conductor's PE jacket and come into direct contact with the copper wire. There are different types of the IDC-type connectors: 110, Krone, universal Dual IDC. Different types of IDC require different tools for termination.

Toolless Keystone Jack is a special type of module. It doesn't need any additional tools for termination. The module's hinged cover snaps down to crimp wires.

Keystone Jack RJ-45, Dual IDC

KJ2-8P8C-C6-90-WH



Keystone Jack RJ-45, Toolless

KJ2-8P8C-C6-TLS-WH



Keystone Jack RJ-45, Fully Shielded

KJ2-8P8C-C6-90-SH-F-WH



Keystone Jack RJ-45, Toolless, Fully Shielded

KJ2-8P8C-C6-TLS-SH-F-WH



Specifications	Meets TIA/EIA-568-A category 6 requirements Meets TIA/EIA TSB-40 requirements Meets ISO/IEC generic cabling standard 11801 requirements Meets CENELEC generic cabling standard EN50173 requirements
Description	It is designed for 22 – 26 AWG solid conductors Vertical termination
Materials	Housing: ABS UL94V-0 IDC: PC UL94V-0, accepts 22 – 26 AWG solid wire PCB: FR-4 0.062" (1.6 mm) thickness, 2 layers Contact: 0.017" (0.45 mm) in diameter, phosphor and bronze with 50 microinches (1.27 micron) gold sputtering
Structural features	Category identification on the front side of the panel Conductor color code according to T568B and T568A Contact color and numerical marking Hyperline patch cord usage provides the best connection Two types of tools may be used for termination: 110 and Krone type
Electrical characteristics	In accordance with UL 1863 Current rating: 1.5 A max Voltage rating: 150 V Contact resistance: 20 mOhm Insulation resistance: 500 MOhm Dielectric withstand voltage: 1000 V, AC RMS, 60 Hz/1 min
Ordering information	KJ2-8P8C-C6-90-WH Keystone Jack RJ-45, Dual IDC, white KJ2-8P8C-C6-90-SH-F-WH Keystone Jack RJ-45, fully shielded KJ2-8P8C-C6-TLS-WH Keystone Jack RJ-45, toolless, white KJ2-8P8C-C6-TLS-SH-F-WH Keystone Jack RJ-45, toolless, fully shielded



Keystone Jack RJ-45, Category 5e

Keystone Jack RJ-45, Vertical Type

KJ2-8P8C-C5e-90-WH



Keystone Jack RJ-45, Horizontal Type*KJ3-8P8C-C5e-180-WH***Keystone Jack RJ-45, Toolless***KJ2-8P8C-C5e-TLS-WH***Keystone Jack RJ-45, Toolless***KJ4-8P8C-C5e-TLS-WH***Keystone Jack RJ-45, Toolless, Fully Shielded***KJ2-8P8C-C5e-TLS-SH-F-WH*

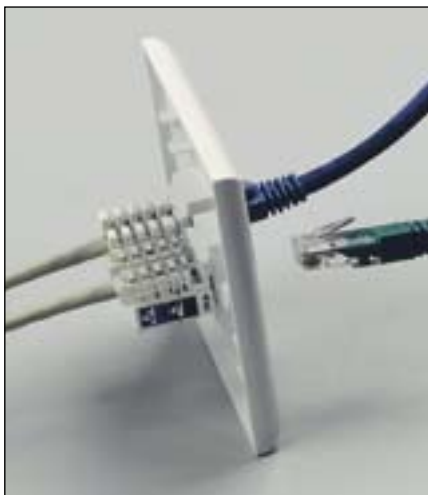
Keystone Jack RJ-45, Fully Shielded

KJ2-8P8C-C5e-90-SH-F-WH



Keystone Jack RJ-45, Half Shielded

KJ1-8P8C-C5e-90-SH-H-WH



Specifications	Meets TIA/EIA-568-A Category 5e requirements Meets TIA/EIA TSB-40 requirements Meets ISO/IEC Generic Cabling Standard 11801 requirements Meets CENELEC Generic Cabling Standard EN50173 requirements
Description	It is designed for 22–26 AWG solid conductors Vertical termination
Materials	Housing: ABS UL94V-0 IDC: PC UL94V-0, accepts 22–26 AWG Solid Wire PCB: FR-4 0.062" (1.6 mm) thick, 2 layers Contact: 0.018" (0.45 mm) in diameter, phosphor and bronze with 50 microinches (1.27 micron) gold sputtering
Structural features	Category identification on the front side of the panel Conductor color code according to T568B and T568A Contact color and numerical marking Hyperline patch cord usage provides the best connection Two types of tools may be used for termination: 110 and Krone type
Electrical characteristics	In accordance with UL 1863 Current rating: 1.5 A max Voltage rating: 150 V Contact resistance: 20 mOhm Insulation resistance: 500 MOhm Dielectric withstand voltage: 1000 V, AC RMS, 60 Hz/1 min
Ordering information	KJ2-8P8C-C5e-90-WH Keystone jack RJ-45, dual IDC, white KJ3-8P8C-C5e-180-WH Keystone jack RJ-45, dual IDC, horizontal type (180°C), white KJ1-8P8C-C5e-90-SH-H-WH Keystone jack RJ-45, dual IDC, half shielded KJ2-8P8C-C5e-90-SH-F-WH Keystone jack RJ-45, fully shielded KJ2-8P8C-C5e-TLS-WH Keystone jack RJ-45, toolless, white KJ4-8P8C-C5e-TLS-WH Keystone jack RJ-45, toolless, white KJ2-8P8C-C5e-TLS-SH-F-WH Keystone jack RJ-45, toolless, fully shielded

Shielded Module RJ-45, For Plate Mounting

KJ1-FP-8P8C-C5e-90-SH



Specification	Meets TIA/EIA-568-A Category 5e requirements Meets TIA/EIA TSB-40 requirements Meets ISO/IEC Generic Cabling Standard 11801 requirements Meets CENELEC Generic Cabling Standard EN50173 requirements Meets fire safety standard UL94V-0 requirements
Description	Installation method – soldering to the plate
Materials	Shield: ABS (nickelized steel) Contacts: phosphor bronze, gold-plated nickel-plating Housing: thermoplastic
Electrical characteristics	Max. current per contact: 1.5 A Max. operating voltage: ~125 V Max. withstand voltage: ~1000 V (50/60 Hz) for 1 minimum Insulation resistance 100 MOhm minimum Contact resistance 39 mOhm maximum Operating temperature range: -40°C to +60°C (-40°F to +140°F)
Ordering information	KJ1-FP-8P8C-C5e-90-SH Module RJ-45, category 5e, fully shielded, for plate mounting



Telephone Keystone Jack RJ-12

Keystone Jack RJ-12 (telephone)

KJ1-6P6C-C2-90-WH



Description	Accepts 1 – 3-pair solid conductor
Materials	Housing: ABS UL94V-0 IDC: PC UL94V-0, accepts 22 – 26 AWG Solid Conductor
Structural features	Conductor color code according to T568B and T568A Contacts color marking of on the transparent module cover Linear conductor layout Conductor connection by simple cover latching The best connection using Hyperline telephone patch-cords
Electrical features	In accordance with UL 1863 Current rating: 1.5 A max Voltage rating: 150 V Contact resistance: 20 mOhm Insulation resistance: 500 MOhm Dielectric withstand voltage: 1000 V, AC RMS, 60 Hz/1 min
Ordering information	KJ1-6P6C-C2-90-WH Keystone Jack RJ-12, IDC, white

